

Mirafi® G Series Drainage Composite

for Retaining Walls, Cut-Off Drains and Landfill Closures

TenCate™ develops and produces materials that function to increase performance, reduce costs and deliver measurable results by working with our customers to provide advanced solutions.

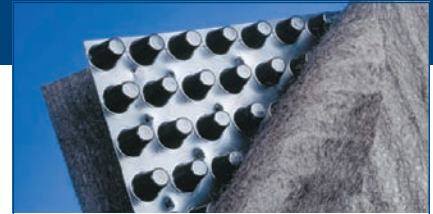
The Difference Mirafi® G Series Drainage Composite Makes:

- Consistent and proven long-term performance due to a multi-directional core configuration providing a uniform flow path for water to escape.
- Relief of hydrostatic pressure buildup against subterranean surfaces.
- High-flow drainage capacity of up to three times the flow capacity of aggregate or sand, assuring effective drainage for virtually any drainage need.
- High compressive strength core that withstands installation and in-situ earth stresses.
- Cost savings due to the lightweight, easy to install 1.22m x 15.24m (4' x 50') panels. This saves the transportation cost of bringing aggregate to the construction site.

Mirafi® G Series drainage composite G100N is produced from a high compressive strength core with a nonwoven polypropylene geotextile bonded to one side. The Mirafi® G Series drainage composite G100W provides the added benefit of a woven monofilament polypropylene geotextile bonded to one side for higher clog resistance and long-term flow capacity. Mirafi® G Series drainage composite G200N, ideal for two-sided drainage applications, is produced with Mirafi® N-Series nonwoven polypropylene geotextile bonded to both sides of a high compressive strength pierced dimple core.

APPLICATIONS

Mirafi® G Series drainage composite G100N products are designed for use in high-flow, high compressive strength, vertical applications where single-sided subsoil drainage filter layer is needed. The flat side of the core fits directly against wall surfaces making it ideal for retaining walls, bridge abutments and other similar retaining structures. Mirafi® G Series drainage composite G200N is designed for use where single or double-sided subsoil drainage filter layer is required.



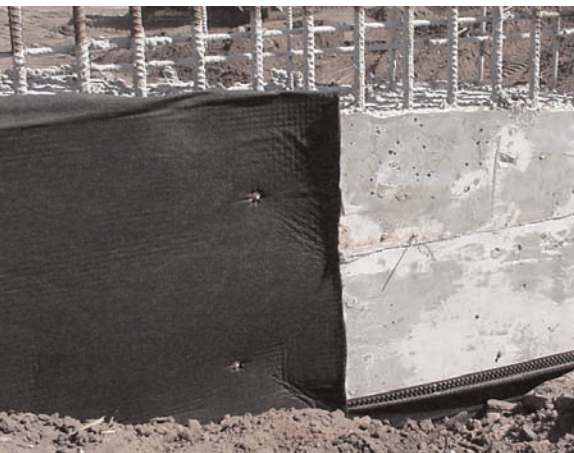
Mirafi® G Series Drainage Composite

Mirafi® G Series drainage composite G200N products are capable of collecting large quantities of subgrade water and conducting it to a discharge pipe or collection system. Ideal applications are placed against the excavation cut of a retaining wall or slope, landfill closure interceptor drainage and in trench drains.

INSTALLATION GUIDELINES*

Detailed installation instructions are available from your TenCate™ representative.

* These guidelines serve as a general basis for installation. Detailed instructions are available from your TenCate™ representative.

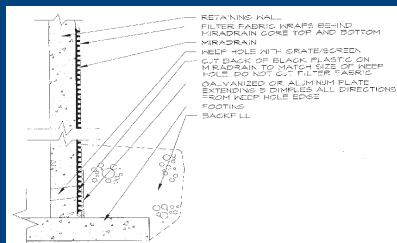


Mirafi® G Series Drainage Composite

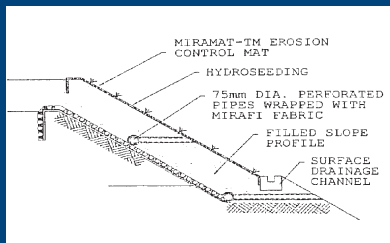
for Retaining Walls, Cut-Off Drains and Landfill Closures

Property	Test Method	Units	G100N	G100W	G200N
CORE					
Color	--	--	black	black	black
Thickness	ASTM D 1777	mm (in)	10.2 (0.40)	10.2 (0.40)	10.2 (0.40)
Compressive Strength	ASTM D 1621	kPa (psf)	861.3 (18000)	861.3 (18000)	861.3 (18000)
Maximum Flow Rate ¹	ASTM D 4716	l/min/m ² (gpm/ft ²)	855.5 (21)	855.5 (21)	260 (21)
Installed Vertically ²	ASTM D 4716	l/min/m ² (gpm/ft ²)	509.3 (12.5)	733.3 (18)	155 (12.5)
Installed Horizontally ³	ASTM D 4716	l/min/m ² (gpm/ft ²)	97.8 (2.4)	154.8 (3.8)	47 (3.8)
<i>¹In plane flow tested at 173kPa (3600psf) with a gradient of 1.0.</i>					
<i>²Installed flow rate with soil or concrete overburden at vertical gradient of 1.0.</i>					
<i>³Installed flow rate with soil overburden at horizontal gradient of 0.05.</i>					
GEOTEXTILE FILTER					
Mirafi® Geotextile	--	--	140NC	FW402	140NC
MECHANICAL PROPERTIES					
Grab Tensile Strength (MD)	ASTM D4632	kN (lbs)	0.5 (111)	1.6 (365)	0.5 (111)
Grab Tensile Strength (CD)	ASTM D4632	kN (lbs)	0.5 (111)	0.9 (200)	0.5 (111)
Mullen Burst Strength	ASTM D 3786	kPa (psi)	1446.7 (220)	3100 (450)	1446.7 (210)
Trapezoidal Tear Strength (MD)	ASTM D 4533	kN (lbs)	0.2 (47)	0.5 (115)	0.2 (45)
Trapezoidal Tear Strength (CD)	ASTM D 4533	kN (lbs)	0.2 (47)	0.3 (75)	0.2 (45)
Puncture Strength	ASTM D 4833	kN (lbs)	0.3 (70)	0.5 (105)	0.31 (70)
UV Resistance after 500 hrs	ASTM D 4355	% strength	70	90	70
HYDRAULIC PROPERTIES					
AOS	ASTM D 4751	mm (U.S. Seive)	0.212 (70)	0.425 (40)	0.212 (70)
Permittivity	ASTM D 4491	sec ⁻¹	1.9	2.1	1.9
Flow Rate	ASTM D 4491	l/min/m ² (gpm/ft ²)	5703.6 (140)	5907.3 (145)	5703.6 (140)
Percent Open Area	COE-02215-86	%	na	10	na
PACKAGING					
Roll Width	--	m (ft)	1.2 (4)	1.2 (4)	1.2 (4)
Roll Length	--	m (ft)	15.2 (50)	15.2 (50)	15.2 (50)
Est. Gross Weight	--	kg (lbs)	22.7 (50)	22.7 (50)	25 (55)
Area	--	m ² (ft ²)	18.6 (200)	18.6 (200)	18.6 (200)

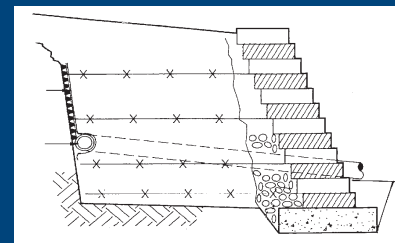
Mirafi® G Series Drainage Composite



Retaining Wall



Slope



Retaining Wall Interceptor Drain

TenCate™ Geosynthetics North America assumes no liability for the accuracy or completeness of this information or for the ultimate use by the purchaser. TenCate™ Geosynthetics North America disclaims any and all express, implied, or statutory standards, warranties or guarantees, including without limitation any implied warranty as to merchantability or fitness for a particular purpose or arising from a course of dealing or usage of trade as to any equipment, materials, or information furnished herewith. This document should not be construed as engineering advice.

Mirafi® is a registered trademark of TenCate™ Geosynthetics North America.

PDS.G1208

365 South Holland Drive Tel 800 685 9990 Fax 706 693 4400
 Pendergrass, GA 30567 Tel 706 693 2226 www.mirafi.com

